

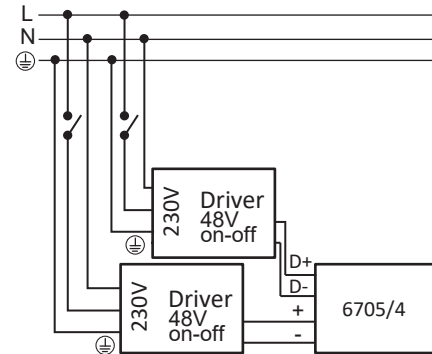
cod.6704/4, 6705/4

Doppia accensione / Double switch

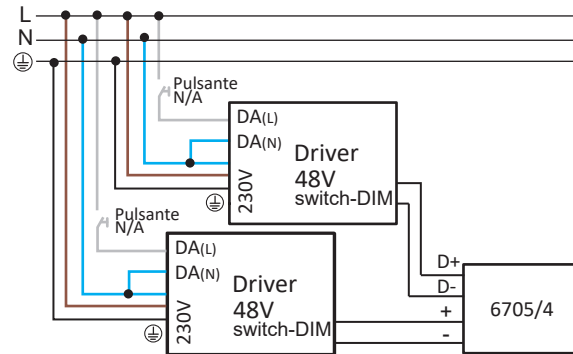
48V L1: VIN
48V L2: DA



on-off

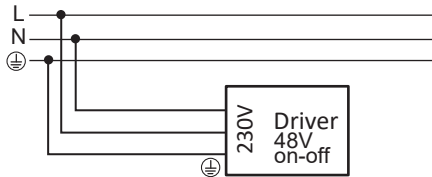


Switch-DIM



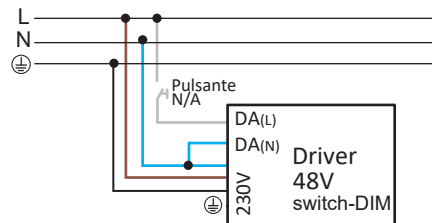
cod.6708..., 6709...

on-off accensione unica / single switch



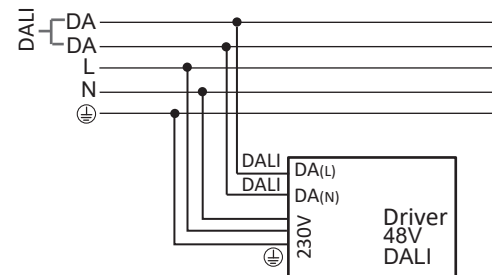
cod.6708.../D3, 6709.../D3

Switch-DIM accensione unica / single switch



cod.6708.../D2, 6709.../D2

DALI accensione unica / single switch



Fast

sistema 48V / 48V system

ISTRUZIONI PER L'INSTALLAZIONE
INSTRUCTIONS FOR INSTALLING
MODE D'INSTALLATION
MONTAGEANWEISUNGEN
INSTRUCTIES VOOR HET INSTALLEREN
INSTRUCCIONES PARA INSTALACION



ATTENZIONE:

La sicurezza dell'apparecchio è garantita solo dall'uso appropriato delle seguenti istruzioni, pertanto è necessario rispettarle e conservarle.

WARNING:

Device security is guaranteed by the appropriate use of the following directions, therefore it is required to follow and to keep them.

ATTENTION:

La sécurité de l'appareil n'est garantie que dans le respect des instructions suivantes, nous vous conseillons donc de les bien conserver.

ACHTUNG:

Die Gerätsicherheit ist versichert unter der Voraussetzung, daß die folgenden Einleitungen richtig verwendet und eingehalten werden, Deshalb ist es notwendig, sie zu bewahren

ATTENTIE:

De veiligheid van het armatuur is alleen gegarandeerd bij het juist toepassen van de volgende montage-voorschriften.

ATENCIÓN:

La seguridad del aparato se garantiza solo cumpliendo cuidadosamente las siguientes instrucciones; por ello, es necesario conservarlas.



- I Apparecchio predisposto per il montaggio diretto su superfici normalmente infiammabili.
- GB Device fitted for directly mounting onto normally inflammable surfaces.
- F Appareil réalisé pour le montage direct sur surfaces normalement inflammables.
- D Leuchte geeignet zur Montage auf normalerweise Flächen.
- NL Toestellen voorzien voor montage op normaal brandbare oppervlakten.
- E Aparato preparado para ser montado directamente en superficies inflamables.

con / with cod. 6708..., 6709...

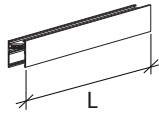
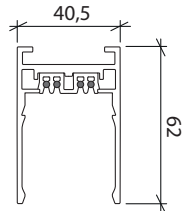


- I Apparecchio di classe II
- GB Class II luminaire
- F Appareil de classe II
- D Garat Klasse II
- NL Toestellen van Klasse II
- E Aparato de clase II

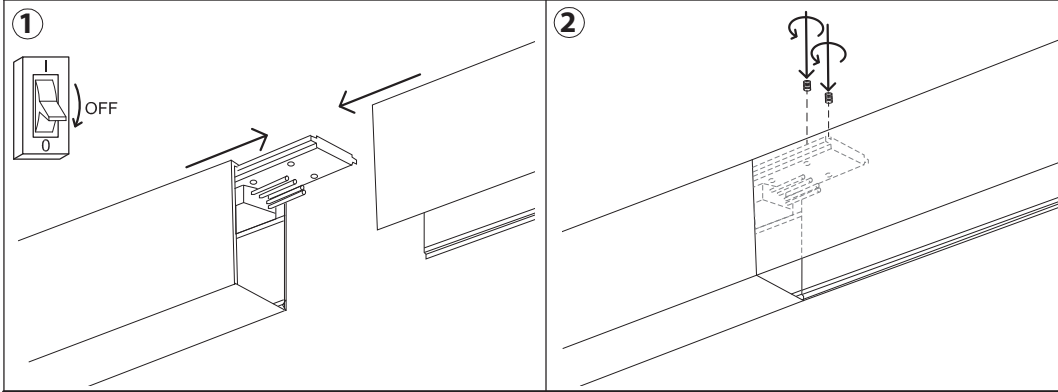
con / with cod. 6704..., 6705...



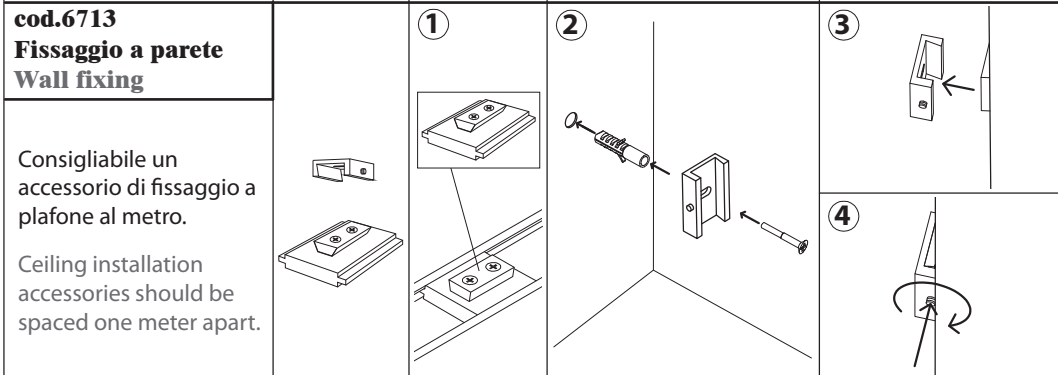
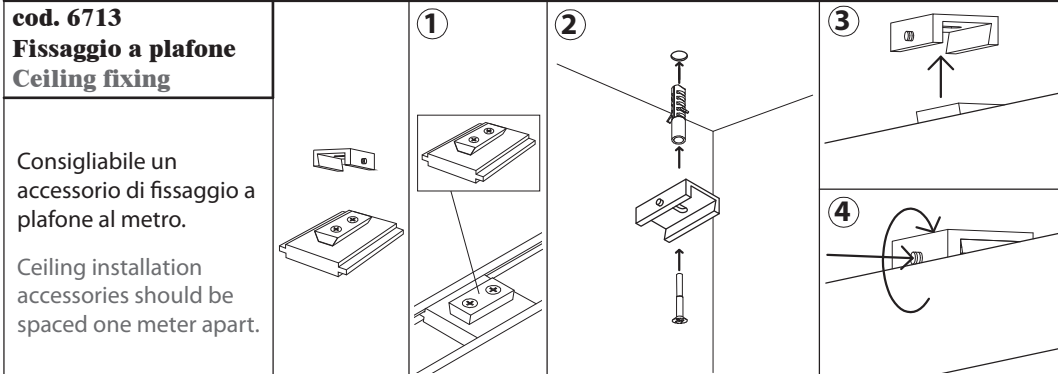
- I Apparecchio di classe III
- GB Class III luminaire
- F Appareil de classe III
- D Garat Klasse III
- NL Toestellen van Klasse III
- E Aparato de clase III

codice code	L		
6700.15...	1500mm		
6700.20...	2000mm		

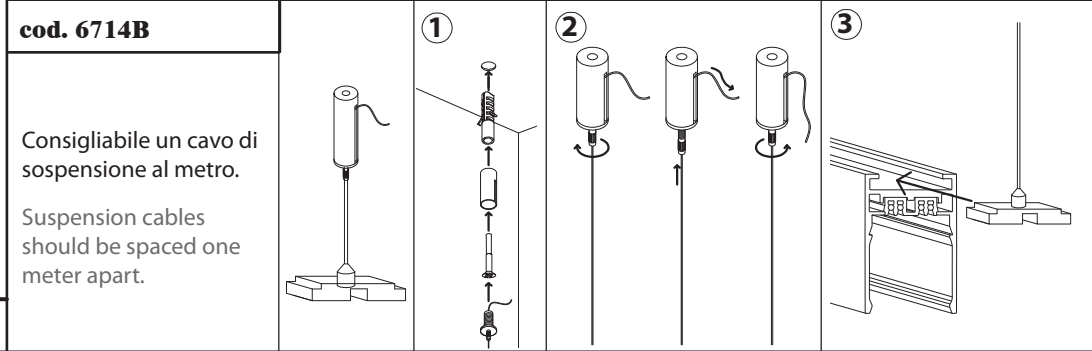
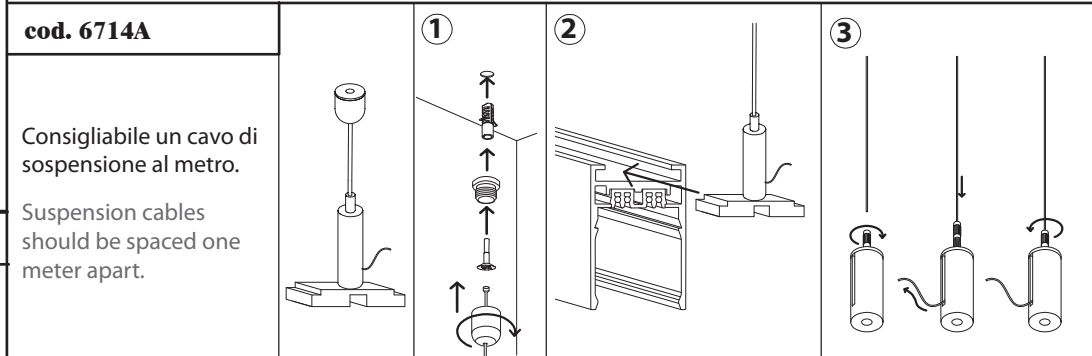
Giunzione moduli-accessori / Joining modules-accessories



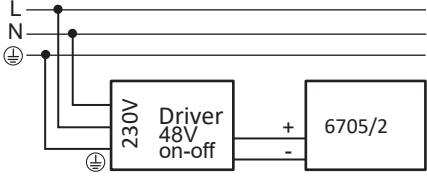

Binario a parete-plafone / Wall-ceiling track



Binario a sospensione / Hanging track



Modulo alimentazione - collegamenti elettrici / Feed module - Wiring

cod.6704/2, 6705/2	cod.6704/4, 6705/4
<p>on-off accensione unica / single switch</p> <p>48V: VIN</p> 	<p>DALI</p> <p>48V: VIN DALI: DA</p> 
<p>switch-DIM accensione unica / single switch</p> <p>48V: VIN</p> 